

FRE270

Specifications						FRE270
Identification	1.1	Manufacturer				Toyota
	1.2	Model				FRE270
	1.3	Drive				Electric
	1.4	Operator type				Rider seated
	1.5	Load capacity/rated load	Q	kg		2700
	1.6	Load centre	c	mm		400 ¹⁾ / 600 ²⁾
	1.8	Load distance, centre of drive axle to fork	x	mm		450
	1.9	Wheelbase	y	mm		1514
Weight	2.1	Service weight including battery		kg		4520 ³⁾
	2.3	Axle load, mast retracted without load, drive/support arm wheel		kg		3323/1351
	2.4	Axle load, mast extended with load, drive/support arm wheel		kg		1366/6016
	2.5	Axle load, mast retracted with load, drive/support arm wheel		kg		3360/4020
Wheels	3.1	Drive/fork wheel				Polyurethane
	3.2	Wheel size front (load end), load wheel/swivel castor				350x108/300x50 (2)
	3.3	Wheel size rear (driver end), drive wheel/swivel castor				350x128/230x65 (2)
	3.5	Wheels, number front/rear (x = driven wheels)				2/2 (1x)
	3.6	Track width, front (load end)	b ₁₀	mm		1560
	3.7	Track width, rear (driver end)	b ₁₁	mm		825
	Dimensions	4.1	Tilt of fork, forward/backward	α/β	deg	
4.2		Height, mast lowered	h ₁	mm		2950
4.3		Free lift	h ₂	mm		2087
4.4		Lift	h ₃	mm		6255
		Lift height	h ₂₃	mm		6300
4.5		Height, mast extended	h ₄	mm		7120
4.7		Height of overhead guard (cab)	h ₆	mm		2260
4.8		Seat height	h ₇	mm		1160
4.10		Height of support arms	h ₈	mm		480
4.15		Height of lowered forks	h ₁₃	mm		45
4.19		Overall length	l ₁	mm		2610*
4.20		Length to face of forks	l ₂	mm		1460
4.21		Overall width	b ₁	mm		1710
4.22		Fork dimensions	s/e/l	mm		45/100 ¹⁾ / 1150, 45/125 ²⁾ / 1150
4.25		Width over forks (fork adjustment min. - max.)	b ₅	mm		540/2220 ¹⁾ , 400/960 ²⁾
4.26		Distance between support arms (load surface)	b ₄	mm		1295
4.28		Reach distance	l ₄	mm		700
4.32		Ground clearance, centre of wheelbase	m ₂	mm		130
4.33		Aisle width for pallets 1000x1200 crossways	A _{st}	mm		2860
4.34		Aisle width for pallets 800x1200 lengthways	A _{st}	mm		3060
4.35	Turning radius	W _a	mm		1988	
4.37	Length over support arms	l ₇	mm		1960	
Performance data	5.1	Travel speed, with/without load		km/h		8,0/8,0
	5.2	Lift speed, with/without load		m/s		0,25/0,44
	5.3	Lowering speed, with/without load		m/s		0,33/0,38
	5.8	Max. gradeability, with/without load ⁴⁾		%		7/12
	5.10	Service brake				Electrical
Electric motor	6.1	Drive motor rating S2 60 min		kW		7,5
	6.2	Lift motor rating S3 15%		kW		14
	6.4	Battery voltage, nominal capacity K _s		V/Ah		48/750
	6.5	Battery weight		kg		1150
	6.6	Energy consumption according to VDI cycle ⁵⁾		kWh/h		3,5
	Other	8.1	Type of drive control			
8.4		Sound level at the driver's ear according to EN 12 053		dB(A)		72

¹⁾ Type "a" fork spreader (spread 540-2220 mm).

²⁾ Type "b" fork spreader (spread 400-960 mm).

³⁾ Triplex mast 6300 mm lift height.

⁴⁾ Measured according to company standard.

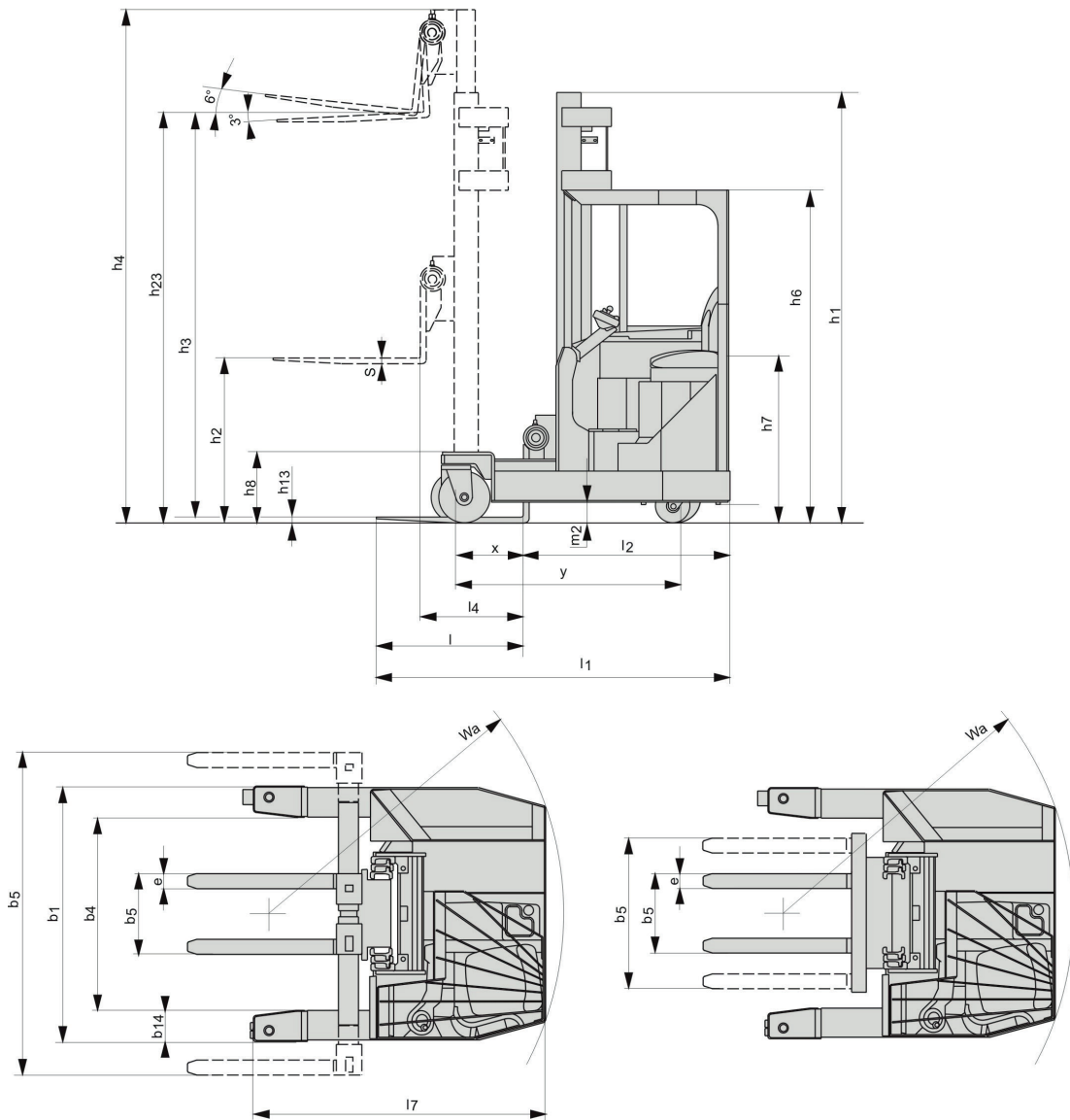
⁵⁾ Contact your supplier for information.

* Depends on length of forks.

Mast dimensions

FRE270			Duplex Hi-Lo		Triplex Hi-Lo								
Lift height	h_{23}	mm	4150	4500	4800	5400	5700	6300	6700	7000	7500	8000	
Lift	h_3	mm	4105	4455	4755	5355	5655	6255	6655	6955	7455	7955	
FRE270	Height, mast lowered	h_1	mm	2920	3100	2450	2650	2750	2950	3180	3280	3550	3710
	Free lift	h_2	mm	2050	2230	1587	1787	1887	2087	2320	2420	2687	2853
	Height, mast extended	h_4	mm	4980	5330	5620	6220	6520	7120	7520	7820	8330	8820

Fork spread type		Load center		Residual capacity			Lift height	
FRE270		mm	400	600	kg			h_{23} mm
	Fork spread 540 - 2220 ("a")	mm	X		2700			5700
		mm	X		2200			8000
		mm		X	2250			5400
		mm		X	1700			8000
	Fork spread 400 - 960 ("b")	mm	X		2700			6300
		mm	X		2200			8000
		mm		X	2700			4500
		mm		X	1700			8000



"a" Wide fork spread across support arms

"b" Thin fork spread between support arms